

FAQ (Frequently Asked Questions)

Ushahidi, Crowdmap and OpenStreetMap

GENERAL INFORMATION

Q) What is Ushahidi? What is Crowdmap? What is OpenStreetMap? And what is Crowdmapping?

A) **Ushahidi** is an open source platform that was created in 2008 to provide valuable assistance for disaster relief during emergency management situations and has been used to gather reports and monitor information such as election results, vacancy lots in New York and even coordinate efforts to locate goods in stock. In its early stages **Ushahidi** – coming from the word in Swahili “testimony” or “witness” – emerge in Africa due to its accessibility, friendly use and potential to be deployable at a global scale.

Crowdmap is a simplified version of the already popular **Ushahidi**. Launched in 2010, the hosted platform was developed so users could quickly indicate their location without downloading any software and add more detail on later posts. The system engages the crowd by using these maps and media content to channel in various reports or topics of desire.

OpenStreetMap focus on create free, editable maps by an active crowdsourcing volunteer community to map street, property and road data all over the world. The “Wikipedia of maps” started in the United Kingdom in 2004 is accessible to anyone and easy to use. Satellite imagery is all the author’s need to start digitizing, regardless previous training or mapping knowledge and the map can be updated when required. **OSM** has been used by several organizations providing relief aid and effective outcomes during humanitarian crises in short periods of time.

The term **Crowdmapping** is composed of the two words Crowd = Large number of people gathered together and Mapping = Map / Cartography and was introduced to publish information by the multitude of users in an area who became producers of messages, information, images and video. This information allow the creation of Digital Maps (primarily online and in real time) thanks to the application of smart phones and web platforms developed specifically for disaster management.

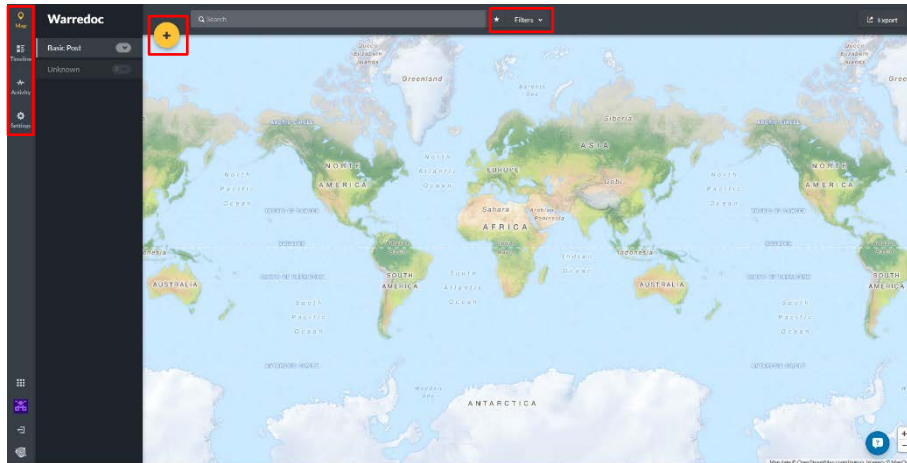
Q) How do I get started with **Ushahidi** and **Crowdmap**?

A) **Ushahidi** and **Crowdmap** are tools not strategies, therefore it’s important to tailor your campaign to help you accomplish your aims.

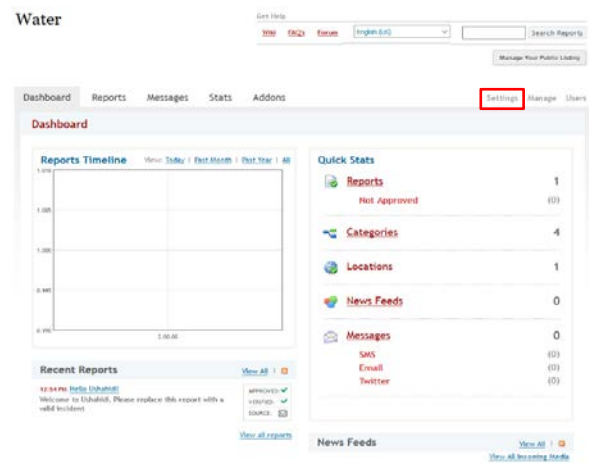
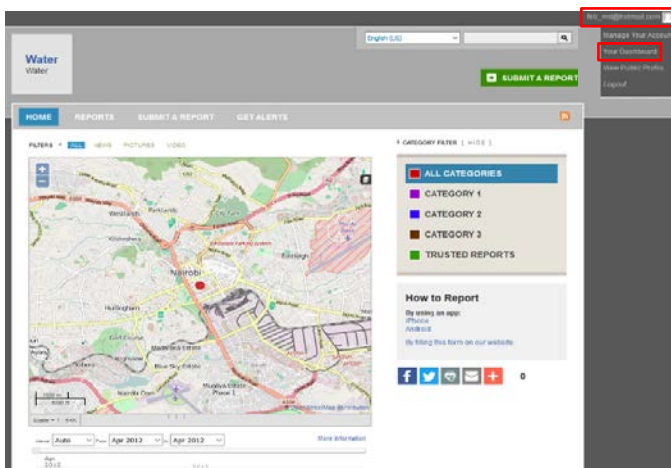
- Built the personal identify of the platform based on your mission and vision cored values
- Set specific objectives and structure your questions to receive a particular and tangible outcome
- Understand and identify your audience
- Create an effective structured team to monitor reports and manage data

Q) What are the main components of **Ushahidi, Crowdmap and OpenStreetMap**? How to get started?

A) The **Ushahidi** platform is composed by a panel mask and a map editing interface. Collect data from many sources, such as the “Add post” button, SMS, email or Twitter. Improve visualization in many ways by clicking in Map, Timeline or Activity at any time. Filter, search and save data by time sets and location ranges. Customize surveys, configure data flows through your deployment and more by using the options available on your Plan from your deployment’s Settings.



Crowdmap is structured by an interactive map showing Nairobi, Kenya as a default location and a category box in the right, depicted by single icons or different colors. A report box include all focal points to receive emails, SMS, reports, Facebook and Twitter posts. The interface can be customize and adapted to the user needs. The dashboard design provides excellent visualization of new posts in summary and is easy to go through to build your deployment.



OpenStreetMap comprises a map control tab and search bar. Zoom in a specific area and select Edit with ID by clicking in the dropdown option. Start digitizing new points, lines or areas to grow confidence and publish your work immediately by hitting save. Add as much detail as wanted and complete the descriptive dialog box in known.

